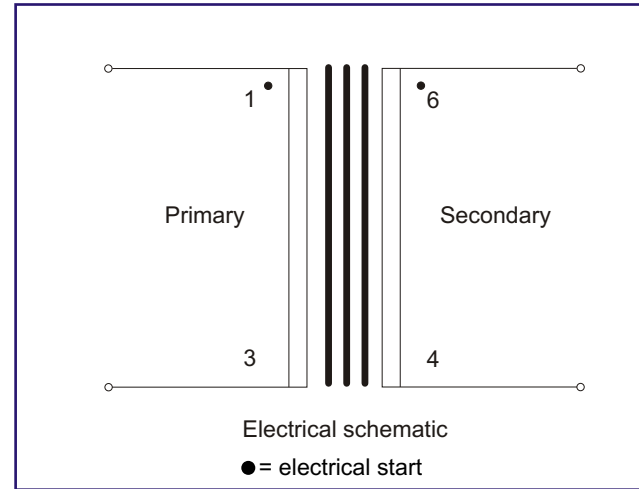
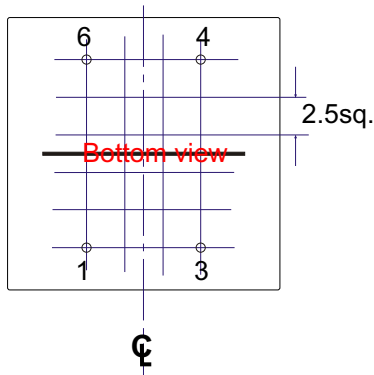
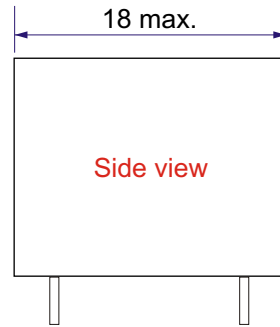
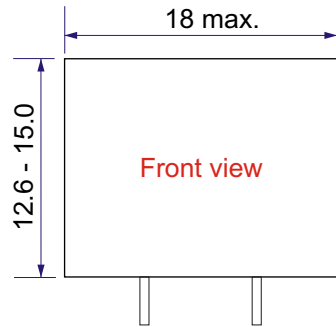




YY WW = date code



**Specification:**

Primary impedance: 600

Turns ratio (@ 6kHz, 0.1Vrms): 1 to 1

DC resistance ( +/-15%)

Primary (3 - 1): 32.0

Secondary (4 - 6): 42.0

**Inductance @ 0.25V, 200Hz, series equivalent**

Primary: 1.9H minimum

Primary leakage inductance @ 1kHz, 0.10V: 1.6mH (typical)

Return loss (200Hz - 4kHz): >21dB

Insertion loss @1kHz: 1.1dB (max.)

Frequency response: 200Hz - 4kHz, +/- 0.4dB

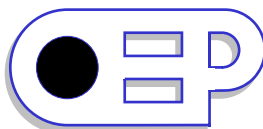
Third harmonic distortion @ -3dBm, 200Hz, -62dB (max.)

Hi-pot, primary to secondary: 3.75kVAC, 1mA for 1 minute

Operating temperature range: 0°C to +70°C

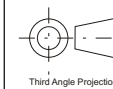
Storage temperature range: -40°C to +125°C

Tolerance on all hole positions +/-0.2mm  
Pin diameter = 0.6mm  
Recommended PCB hole size: 1.0mm



Unit 5, Oxonian Park, Langford Locks,  
Kidlington, Oxfordshire. OX5 1FP  
Tel: (01865) 855085 Fax: (01865) 855075  
Website: [www.oep.co.uk](http://www.oep.co.uk)

DESCRIPTION	ISSUE	DATE	DRAWN	CHECKED	DRAWING NUMBER
600 line isolating transformer	1	26/08/05	CS		<b>Z1640E</b>
	2	31/01/12	CS		
Scale: 2 to 1					



All dimensions in mm unless stated otherwise